

Wabash Blues

D.Ringle & F.Meinkln 1921
Bearbeitung Tommy Dohrn
D7 D7

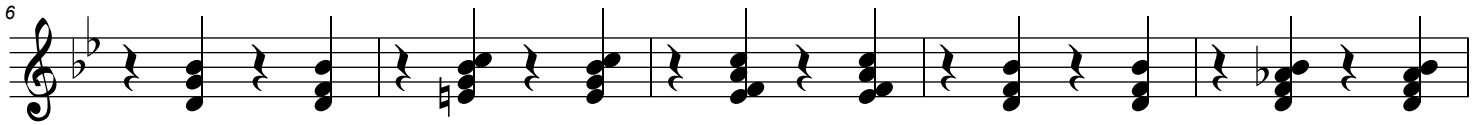
Foxtrot (♩ = 80)

B B Gm Gm B B C7 C7 F7 F7 B B


Banjo



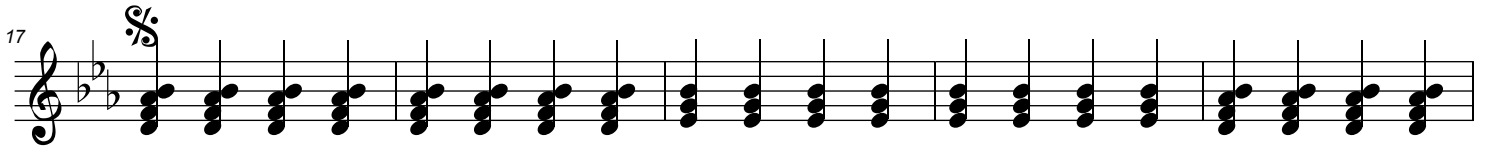
Gm Gm B B C7 C7 F7 F7 B B B7 B7



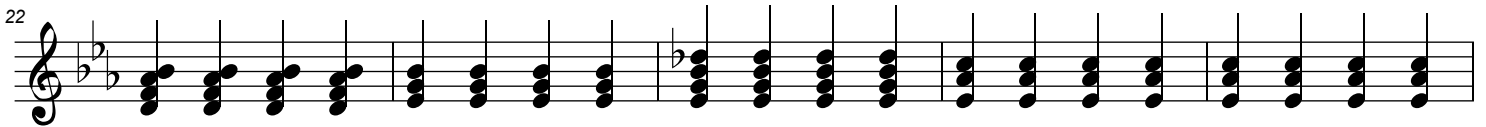
E♭ E♭ F#7 F#7 B B B7 B7 G G C7 C7 F7 F7 B



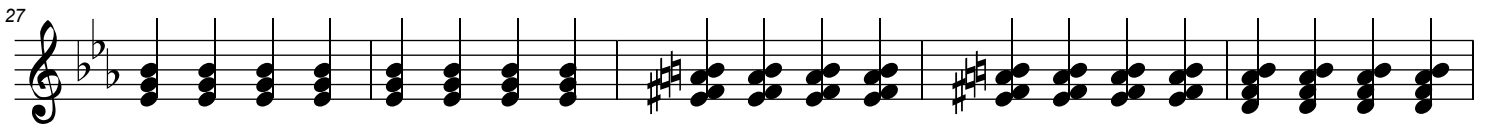
B7 E♭ B7



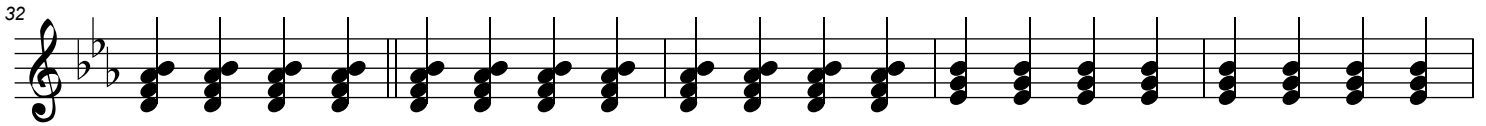
E♭ E♭7 A♭



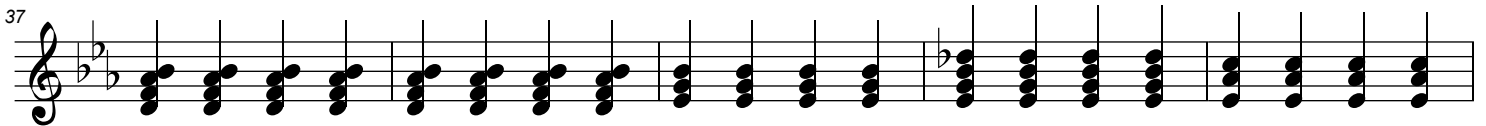
E♭ H7 B7



E♭



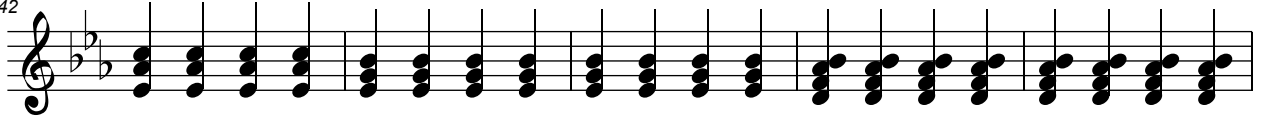
B7 E♭ E♭7 A♭



E \flat

B7

42



E \flat

F7

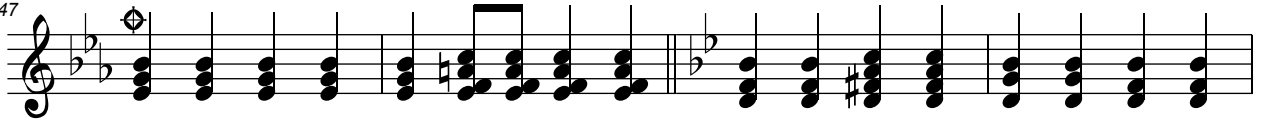
B

D7

Gm

B

47



F#

C# 7

F#

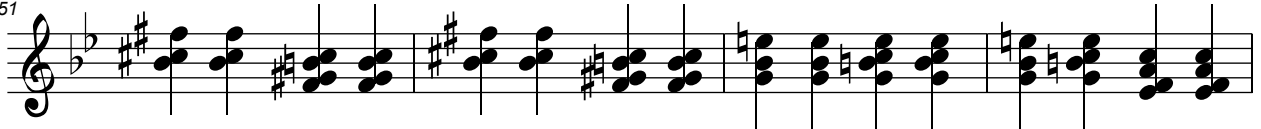
C# 7

Edim

Em \flat 6

Edim Em \flat 7

51



B

B7

E \flat

E \flat m B

E \flat

55

D.S. al Coda

