

HIAWATHA

Nell Morst 1901
Bearbeitet Tommy Dohrn
Credit by Chris Barber

Banjo

swing (♩ = 120)

B A Ab 7B GdimAb 7 B 1. 2. Eb

B7 Eb

12

B7 Eb 1. 2.

20

Ab Adim Ab Eb B7 Eb

28

Ab Eb B7 Eb 1.

36

2. B7

44

Eb B7

52

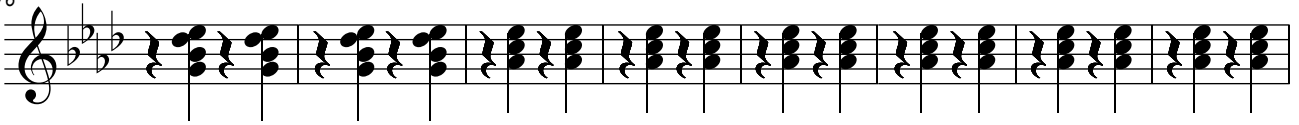
Eb 1. 2. Ab

60

Eb 7

68

76



A \flat 7

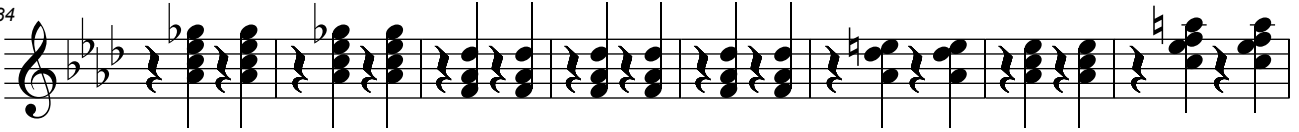
D \flat

D \flat m

A \flat

F7

84

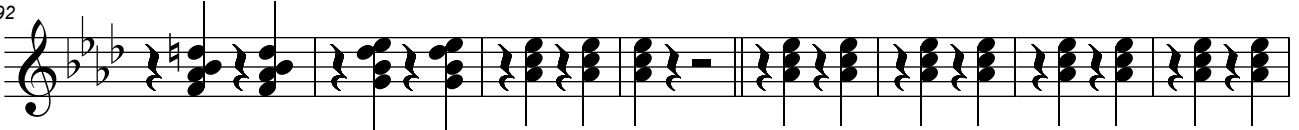


B7

E \flat 7

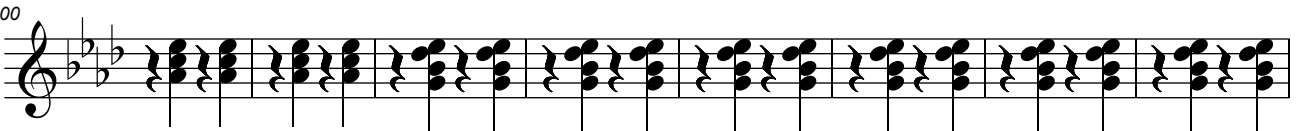
A \flat

92



E \flat 7

100



A \flat

108



A \flat 7

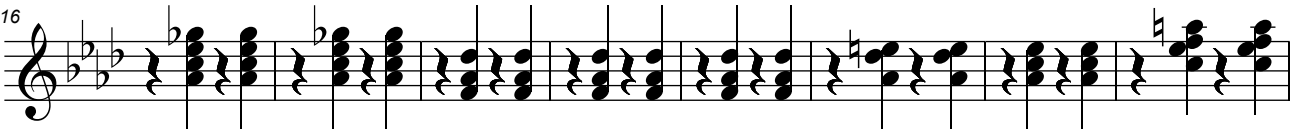
D \flat

D \flat m

A \flat

F7

116



B7

E \flat 7

A \flat

E \flat

B7

124



E \flat

B7

132



E \flat

140



148



3
156

Andante

