

# HIAWATHA

Nell Morst 1901  
Bearbeitet Tommy Dohrn

1. *swing* (♩ = 120)

tb

1. 2.

Detailed description: This block contains the first six measures of the tuba part. It begins with a treble clef, a key signature of two flats (B-flat and E-flat), and a 4/4 time signature. The tempo is marked 'swing' with a quarter note equal to 120 beats per minute. The notation includes a first ending bracket over measures 5 and 6, and a second ending bracket over measure 6. The music features a series of eighth notes in the first four measures, followed by a half note in the fifth measure, and a quarter note in the sixth measure.

7

Detailed description: This block contains measures 7 through 12. The notation continues with eighth notes in measures 7-8, followed by quarter notes in measures 9-10, and eighth notes in measures 11-12. A repeat sign is placed at the beginning of measure 11.

13

Detailed description: This block contains measures 13 through 18. It features a mix of eighth and quarter notes, with a half note in measure 15. A repeat sign is placed at the beginning of measure 13.

19

1.

Detailed description: This block contains measures 19 through 24. It continues with eighth and quarter notes. A first ending bracket is placed over measures 23 and 24.

25

2.

Detailed description: This block contains measures 25 through 30. It features eighth and quarter notes. A second ending bracket is placed over measures 25 and 26. A repeat sign is placed at the beginning of measure 25.

31

Detailed description: This block contains measures 31 through 36. It continues with eighth and quarter notes. A repeat sign is placed at the beginning of measure 31.

37

Detailed description: This block contains measures 37 through 42. It features eighth and quarter notes. A first ending bracket is placed over measures 41 and 42.

43

2.

Detailed description: This block contains measures 43 through 48. It continues with eighth and quarter notes. A second ending bracket is placed over measures 43 and 44. A repeat sign is placed at the beginning of measure 43.

49

Detailed description: This block contains measures 49 through 54. It features eighth and quarter notes. A repeat sign is placed at the beginning of measure 49.

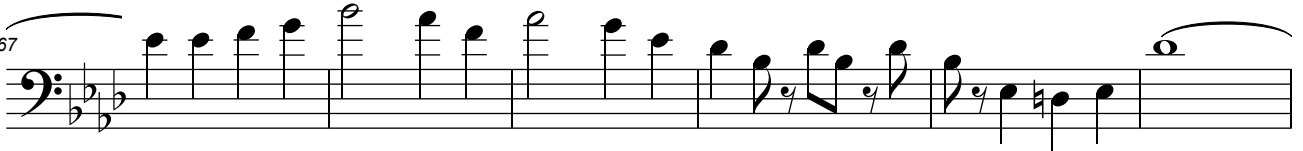
55



61



67



73



79



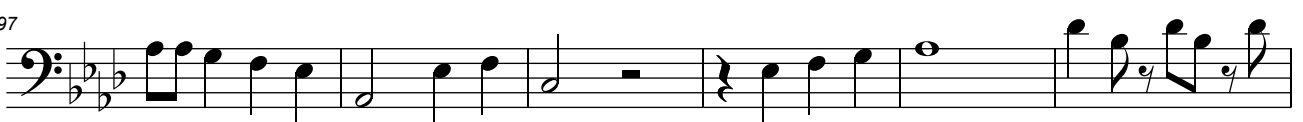
85



91



97



103

